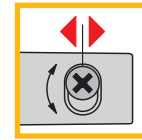
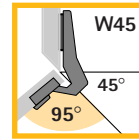


Intermat 9936 W45

Fast-assembly hinge for corner cabinets

Opening angle 95°



Concealed hinge, snap-on assembly, integrated door overlay and eccentric depth adjustment

Opening angle 95°, cup diameter 35 mm

For corner cupboards and cabinets with 45° face angle

Intermat 9936 W45 hinges are snapped on to the mounting plate

Depth adjustment via eccentric screw -0,5 mm/+3,5 mm.

Height adjustment via mounting plate +2 mm/-2 mm

Overlay adjustment +2 mm/-3 mm

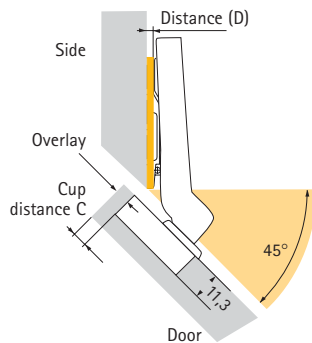
Minimum reveal

Cup distance C mm	Door thickness mm						
	16	17	18	19	20	22	24
3	0,4	0,6	0,8	1,0	1,2	1,8	2,5
4	0,4	0,6	0,8	1,0	1,2	1,8	2,5
4,5	0,4	0,6	0,8	1,0	1,2	1,8	2,5
5	0,4	0,6	0,8	1,0	1,2	1,7	2,4
6	0,4	0,6	0,8	1,0	1,2	1,7	2,3
7	0,4	0,5	0,7	0,9	1,1	1,6	2,2
8	0,4	0,5	0,7	0,9	1,1	1,6	2,1

Mounting plates page 57-60
Cover caps, accessories page 61

For more technical information refer to page 32-36

Mounting option

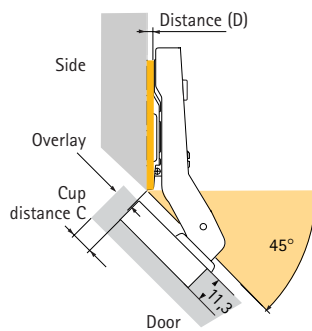


Full overlay

TB 43 (press-in)	PU 50	Door buffer Silent System (grey)	
	077 701	screw-on	drill-in
		9 015 115	9 013 069
		PU: 400	PU: 800

D	Overlay mm						
0	5,5	6,5	7,0	7,5	8,5	9,5	10,5
1,5	6,9	7,9	5,0	5,5	6,5	7,5	8,5
3	4,8	5,8	3,0	3,5	4,5	5,5	6,5
	3	4	4,5	5	6	7	8

Cup distance C mm

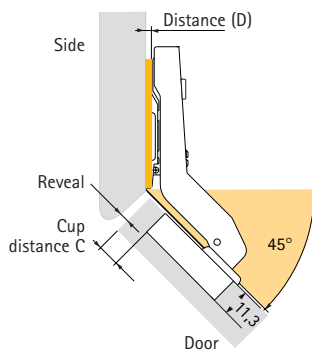


Half overlay

TB 43 (press-in)	PU 50	Door buffer Silent System (grey)	
	048 098	screw-on	drill-in
		9 015 115	9 013 069
		PU: 400	PU: 800

D	Overlay mm						
0	9	10	10,5	11	12	13	14
1,5	6,9	7,9	8,4	8,9	9,9	10,9	11,9
3	4,8	5,8	6,3	6,8	7,8	8,8	9,8
	3	4	4,5	5	6	7	8

Cup distance C mm



Inset

TB 43 (press-in)	PU 50	Door buffer Silent System (grey)	
	073 934	screw-on	
		9 027 941	
		PU: 50	

D	Reveal mm						
0	14	13	12,5	12	11	10	9
1,5	16,1	15,1	14,6	14,1	13,1	12,1	11,1
3	18,2	17,2	16,7	16,2	15,2	14,2	13,2
8	25,3	24,3	23,8	23,3	22,3	21,3	20,3
	3	4	4,5	5	6	7	8

Cup distance C mm

Specification

Hettich Intermat 9936 W45

Snap-on assembly

Eccentric depth adjustment

for 45° face angles

Opening angle 95°

Note:

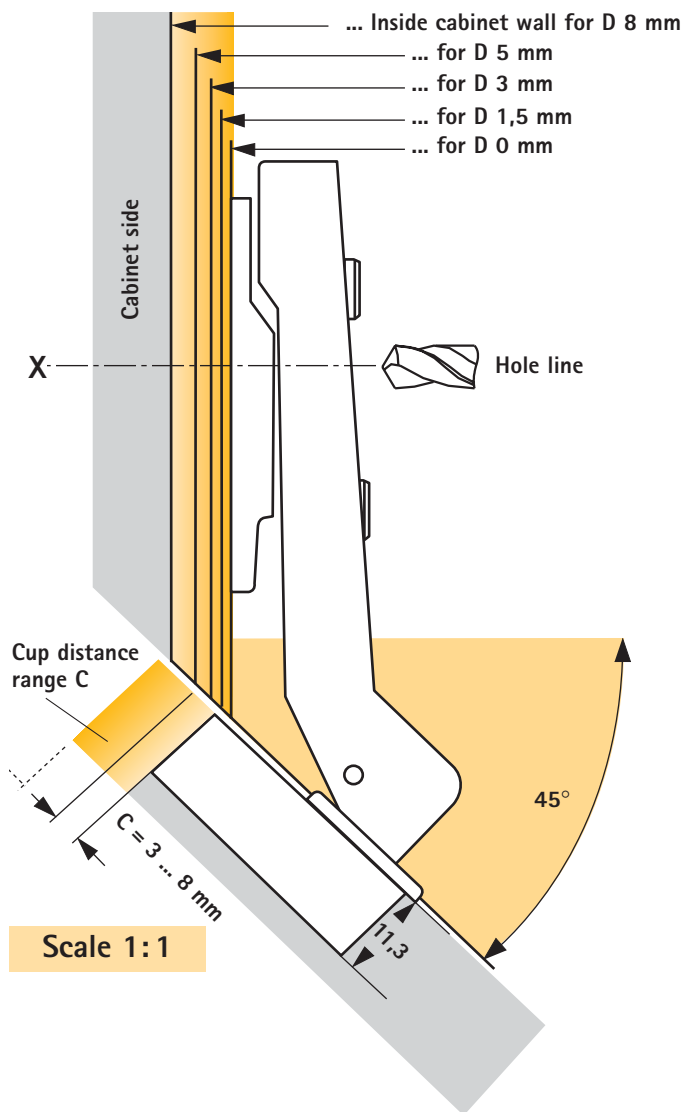
Drawings on this page are to full scale and show the hinges plus mounting plate distances. By drawing in the required cup distance C (3-8 mm), the door overlay can be measured directly from the applicable distance line.

The distance from the **cabinet front edge to X** on the selected distance line is also equal to the hole line distance from the cabinet front edge.

For **inset-mounted** doors, the cup distance and door thickness must be taken into account when determining the **minimum door reveal**.

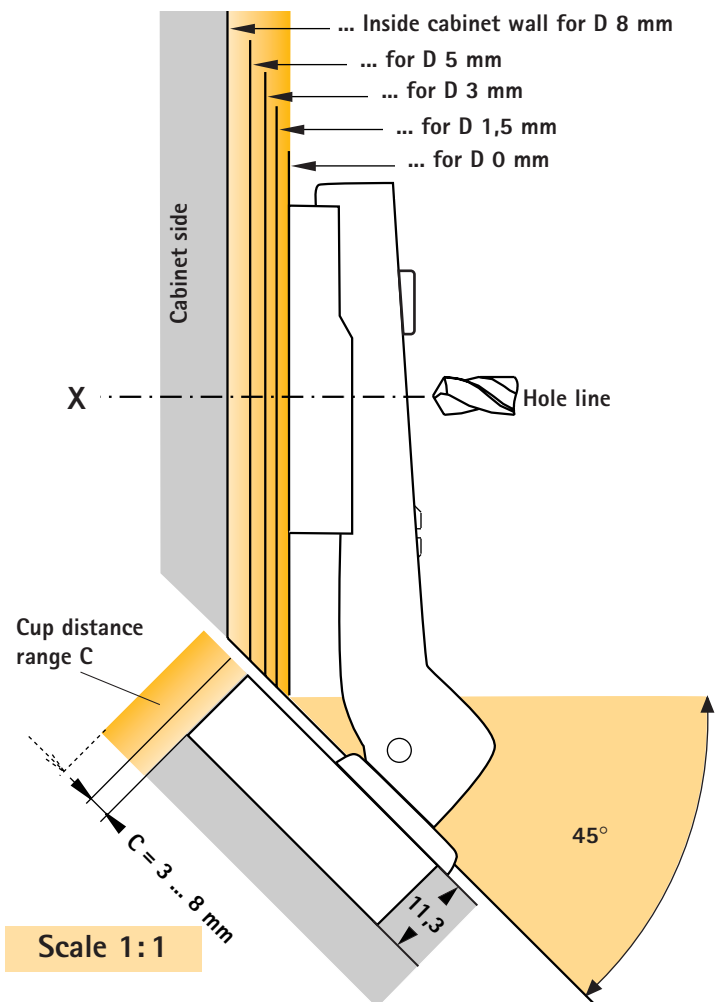
Half overlay, cranking 0 mm

* Overlay adjustment +2 mm / -3 mm



Full overlay, cranking 6 mm

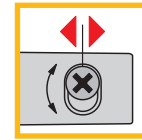
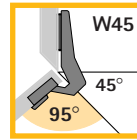
* Overlay adjustment +2 mm / -3 mm



Intermat 9936 W45

Fast-assembly hinge for corner cabinets

Opening angle 95°



Note:

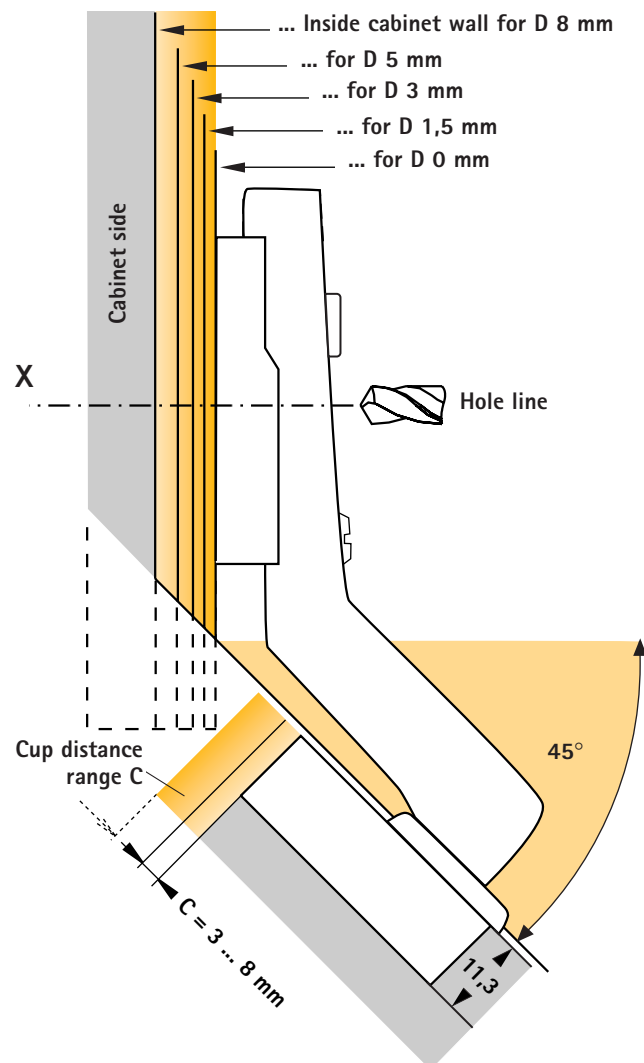
Drawings on this page are to full scale and show the hinges plus mounting plate distances. By drawing in the required cup distance C (3-8 mm), the door overlay can be measured directly from the applicable distance line.

The distance from the **cabinet front edge** to X on the selected distance line is also equal to the hole line distance from the cabinet front edge.

For **inset-mounted** doors, the cup distance and door thickness must be taken into account when determining the **minimum door reveal**.

Inset, cranking - 17 mm

* Reveal adjustment -2 mm / +3 mm

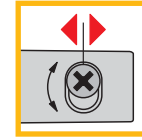
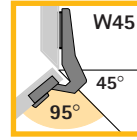


Scale 1:1

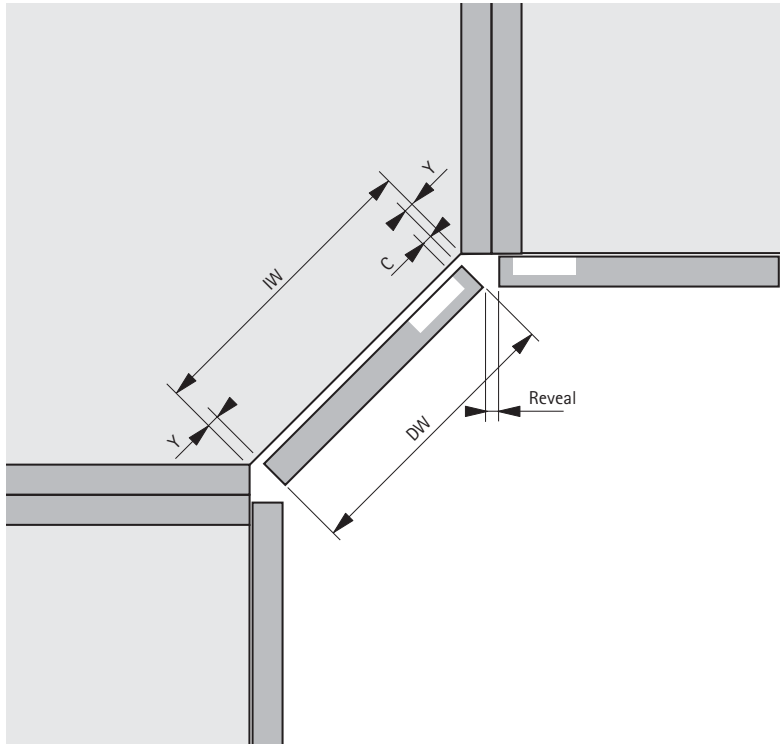
Intermat 9936 W45

Fast-assembly hinge for corner cabinets

Opening angle 95°



Mounting configuration Intermat 9936 W45

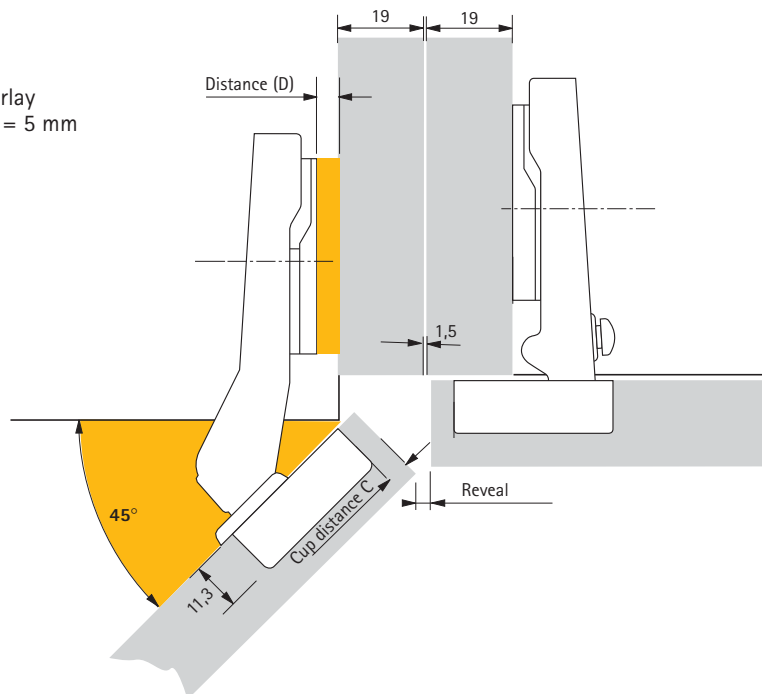


IW = Installation width
 DW = Door width
 Y = Reveal
 $DW = IW - (2 \times Y)$
 C = Cup distance

D	Reveal mm							
5	6,5	5,5	5	4,5	3,5	2,5	1,5	
	3	4	4,5	5	6	7	8	
	Cup distance C mm							

D	Y Side Gap							
5	5	4	3,5	3	2	1	0	
	3	4	4,5	5	6	7	8	
	Cup distance C mm							

Mounting configuration:
 Intermat 9936 W45 half overlay
 Mounting plate distance (D) = 5 mm



Mounting configuration:
 Intermat 9943 full overlay
 Mounting plate distance (D) = 1,5 mm