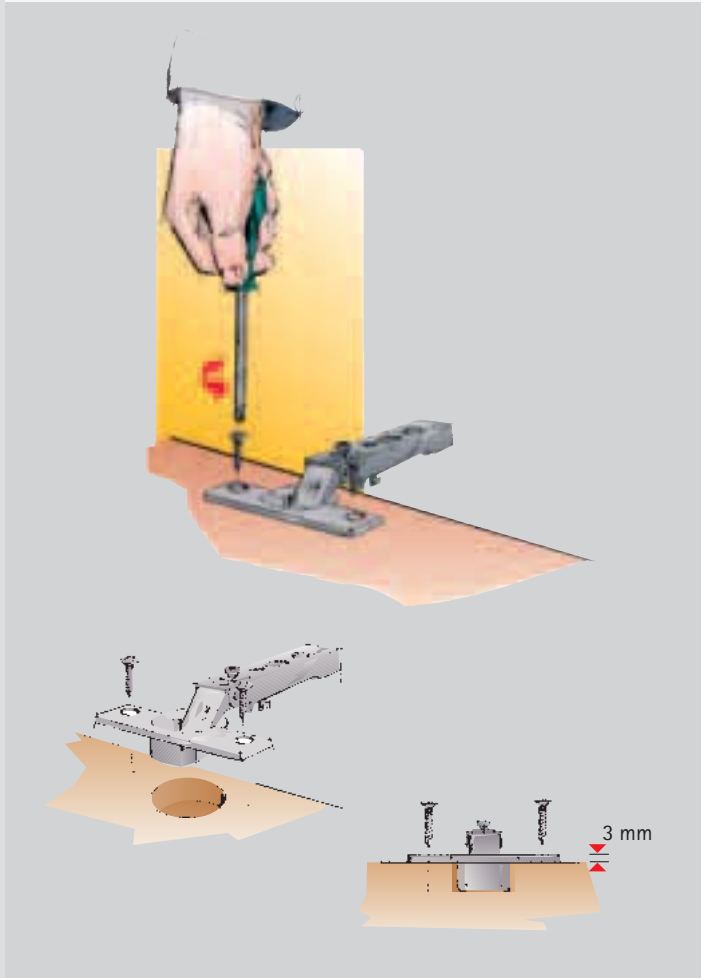
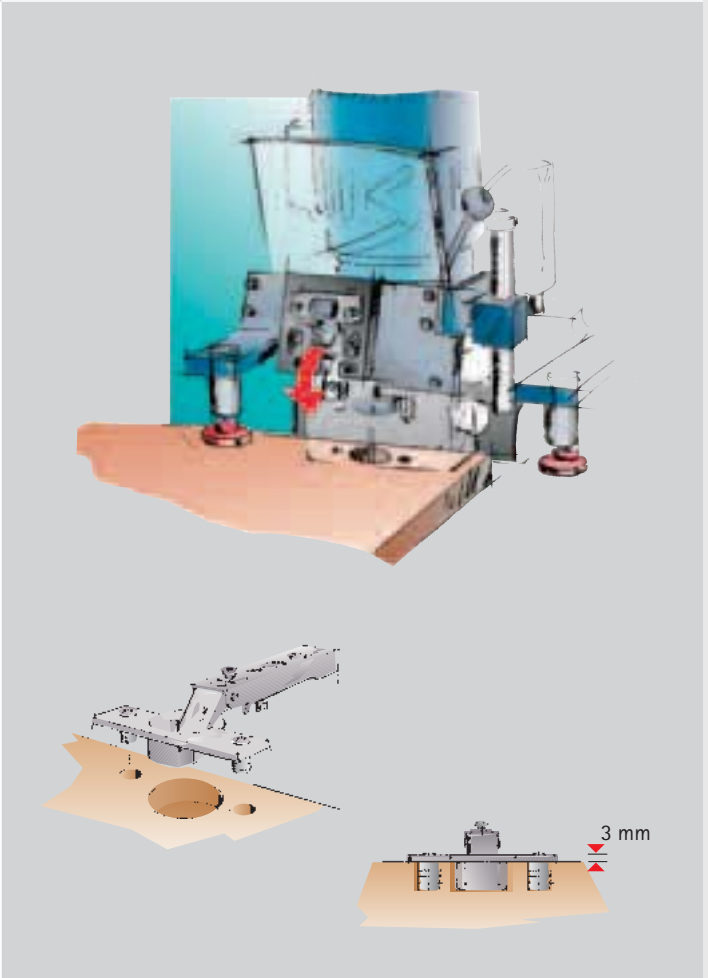


Intermat/Ecomat

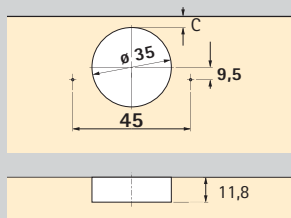
Cup TB 42
Screw-on



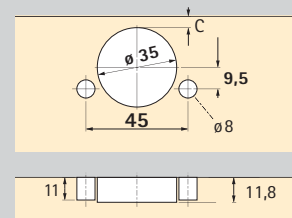
Cup TB 43
Press-in



Cup TB 42

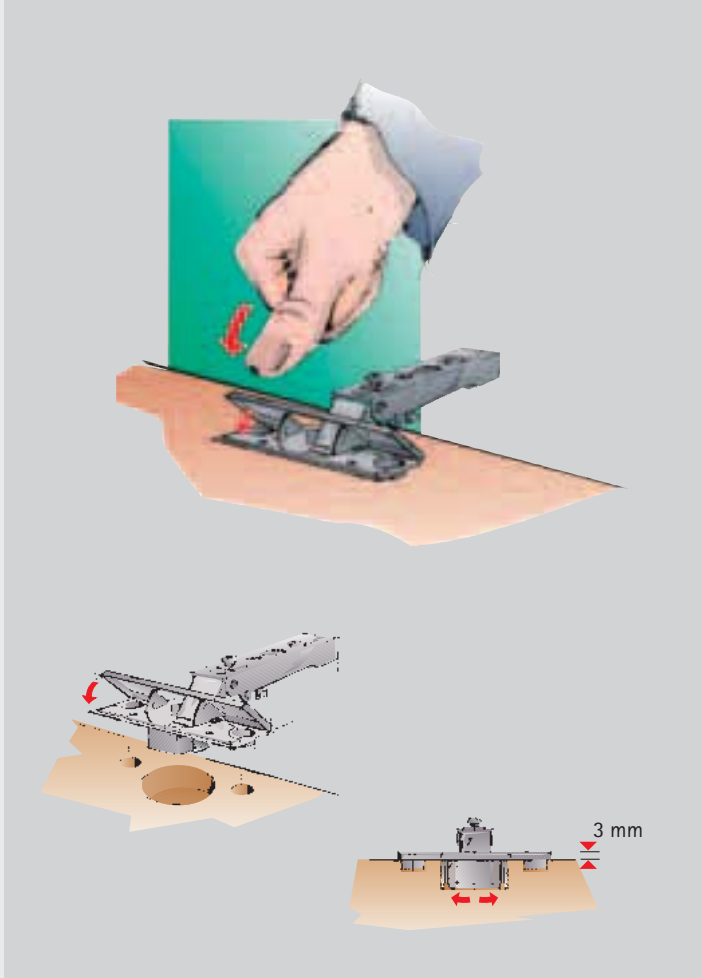


Cup TB 43

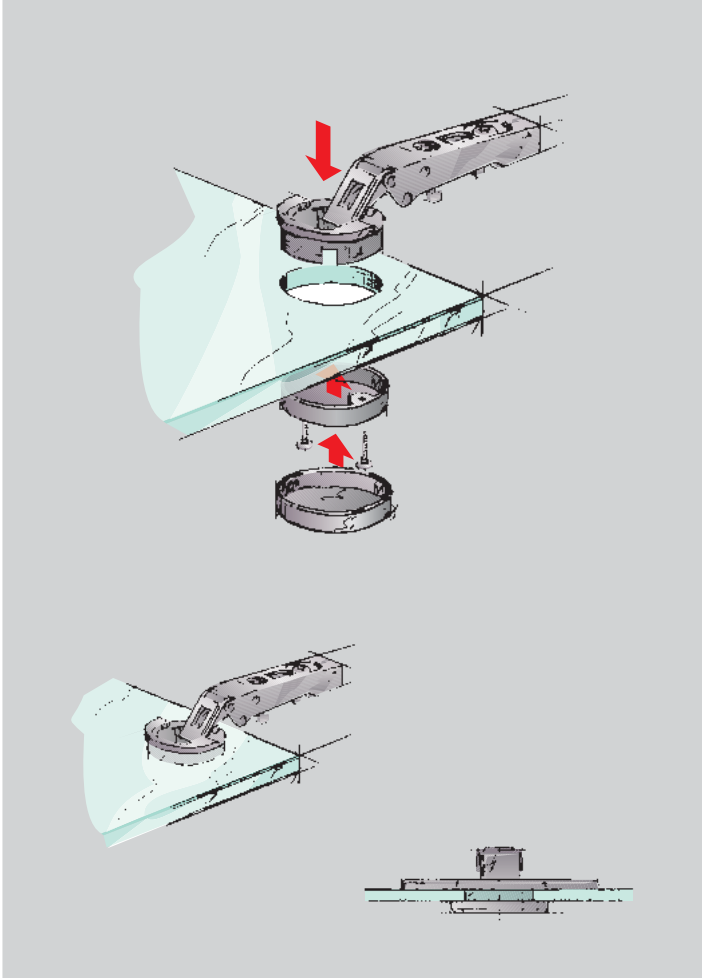


All mounting variants and drill pattern hole dimension at a glance

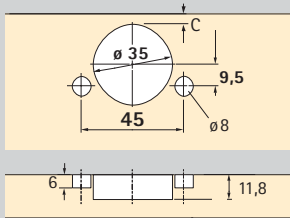
Cup TB FIX
Toolless fast assembly



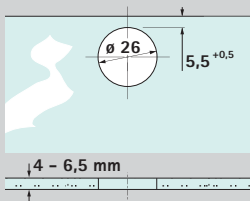
Special solutions for glass doors



Cup TB FIX



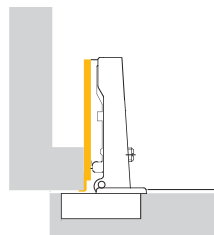
Cup T 1 for glass doors





Mounting options

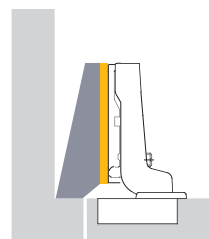
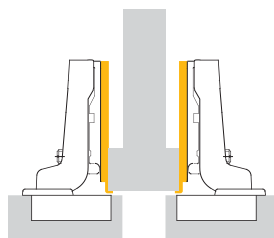
There are three basic methods of mounting hinges



Full overlay

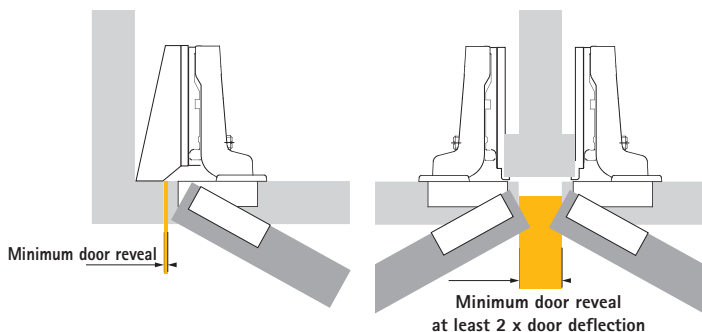
In this configuration, the door is positioned in front of a side wall of the cabinet. The reveal at one side is such that the door can be opened safely.

Half overlay
In this configuration, two doors are positioned in front of the middle wall of a cabinet. The distance between the doors is the total required reveal. The door overlay is reduced which necessitates the use of cranked hinges.



Inset

In this configuration, the door is positioned inside the side wall of the cabinet. A reveal is required for opening the door. This configuration necessitates the use of heavily cranked hinges.



Minimum door reveal

The minimum reveal, also called door deflection, is the space required for opening a door. The amount of reveal depends on the cup distance C, the door thickness and the hinge type. Chamfered door edges reduce the reveal required. The required minimum reveal can be derived from the table provided for each hinge.

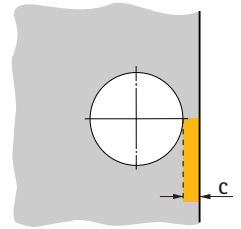
Minimum door reveal for half overlay

For half overlay configurations, the total reveal between the doors must be chosen to correspond to twice the door reveal. Both doors can then be opened at the same time.

Cup distance C

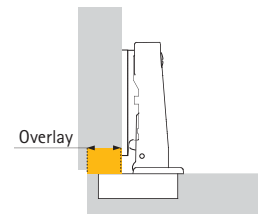
The cup distance C is the distance between the edge of the door and the edge of the cup hole. The maximum cup distance depends on the hinge in question.

The larger the cup distance, the smaller the required minimum reveal.



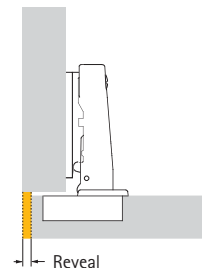
Overlay (Door overlay)

The overlay is the distance by which the door projects over the cabinet front.



Reveal

The reveal is the distance between the outer edge of the door and the outer side of the cabinet (full overlay), the distance between two doors (half overlay), the distance between the outer edge of the door and the inner side of the cabinet (inset).



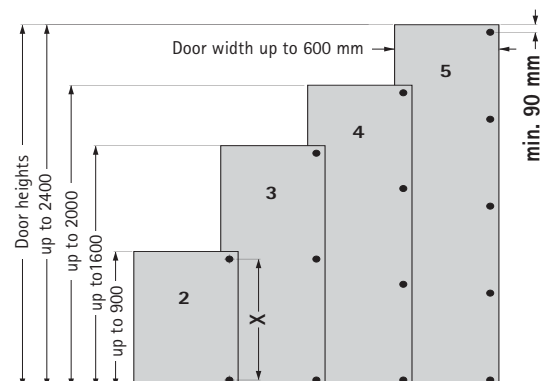
Number of hinges per door:

Door width, door height, door weight plus material quality of the door are key factors for determining the required number of hinges. In practice, these factors are very variable. The numbers given in the diagram are for reference only. A trial mounting is recommended if in doubt.

For stability, the distance between hinges should be chosen as large as possible.

X = distance between two hinges

(Reference values for 19 mm thick chipboard with a density of 750 kg/m³)



Technical information

Intermat

Fast-assembly hinges



Distance

Mounting plates are available in various thicknesses with an effective height characterized by the value of the distance.

Starting point for calculating the required distance is the selected hinge with defined door overlay.

Using planned cup distance and door thickness, first read the required reveal value from the table. If this value is too large for the desired overlay, it can be reduced either by increasing the cup distance C or by chamfering the door edge.

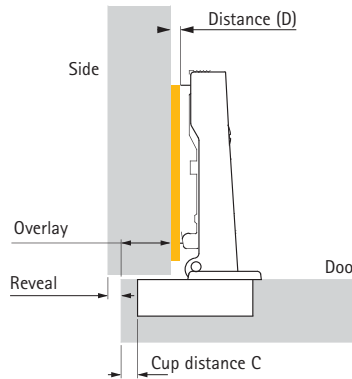
Once the door reveal and cup distance C have been defined, the mounting plate distance can be derived from the table.

If the distance value deviates from the actual mounting plate distance shown in the catalogue, the difference can be compensated by turning the overlay adjustment screw.

Example: Intermat 9943 - Full overlay

Fixed sizes **Overlay** 14,5 mm
Cup distance 4,5 mm

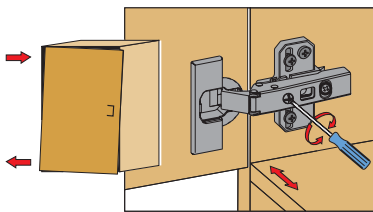
The table shows a **Distance (D)** of 3 mm



D	Overlay mm					
0	16	17	17,5	18	19	
1,5	14,5	15,5	16	16,5	17,5	
3	13	14	14,5	15	16	
4,5	11,5	12,5	13	13,5	14,5	
8	8	9	9,5	10	11	
	3	4	4,5	5	6	
	Cup distance C mm					

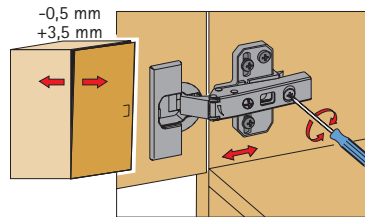
Door adjustment

Overlay adjustment



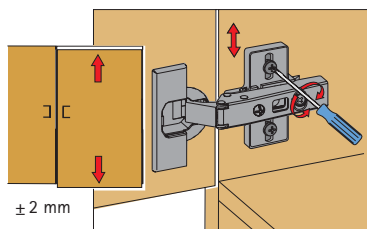
Turn screw **clockwise**:
Door overlay **decreases** (-).
Turn screw **anticlockwise**:
Door overlay **increases** (+).

Depth adjustment

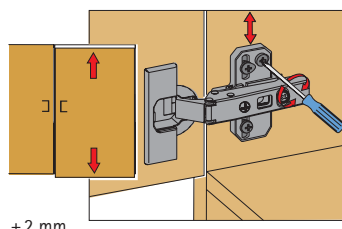


Direct, variable depth adjustment
with the eccentric screw

Height adjustment

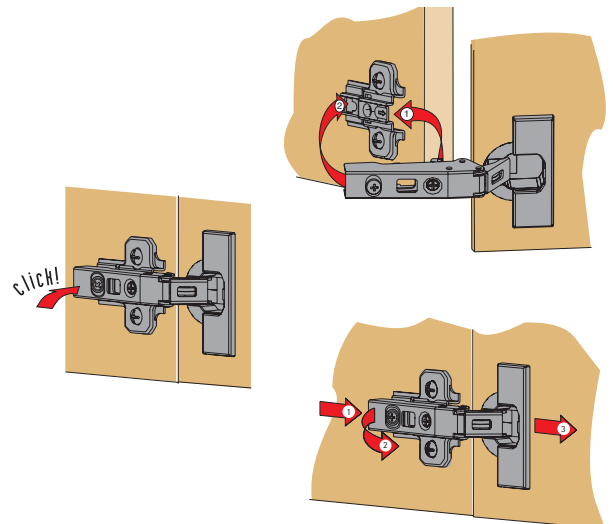


Using **height-adjustable mounting plates** makes it possible to align the exact door height.



Direct, variable height adjustment
with eccentric screw

When using Ecomat and linear mounting plates with eccentric height adjustment, the hinge has to be moved out of the way in order to adjust the height.



Intermat

Snap-on assembly, disassembly

Characteristic for Intermat hinges is the ergonomic **snap-on assembly**. The hinge is slipped into the front of the mounting plate (1), then a light finger pressure and the hinge arm latches onto the mounting plate (2) with an audible click.

The hinge arm is now securely clamped, via five points, with zero play.

Doors are clipped on **zipper style from top to bottom** - the top hinge alone is capable of taking the total weight of the door.

Disassembly is carried out in the opposite direction **from bottom to top**.

The hinge is unlatched by pressing lightly on latch (1) which is hidden under the side arm for security reasons.

In one movement, the hinge arm is lifted off the mounting plate (2) and the door is removed from the cabinet (3).

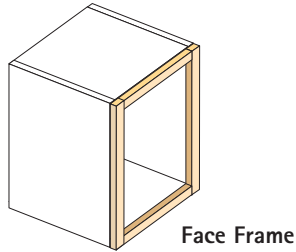
Technical information

Determine construction

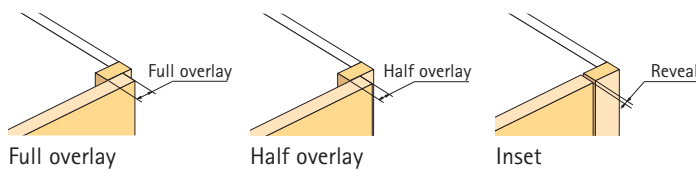


Face Frame

Step 1: Determine cabinet construction



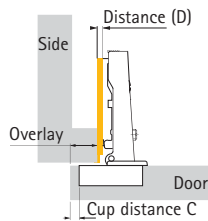
Step 2: Determine mounting option



Step 3: Cup distance

D	Overlay mm				
0	16	17	17,5	18	19
1,5	14,5	15,5	16	16,5	17,5
3	13	14	14,5	15	16
4,5	11,5	12,5	13	13,5	14,5
8	8	9	9,5	10	11
	3	4	4,5	5	6

Cup distance C mm

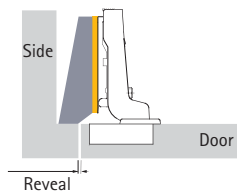


Step 4: Check minimum reveal

The minimum reveal is reduced for doors with radii:
1 mm radius: table entry – 0,4 mm
3 mm radius: table entry – 1,2 mm

Minimum reveal

Cup distance C mm	Door thickness mm				
	16	17	18	19	20
3	0,6	0,8	1,1	1,5	1,9
4	0,5	0,7	1,0	1,4	1,8
4,5	0,5	0,7	1,0	1,4	1,8
5	0,5	0,7	1,0	1,4	1,8
6	0,5	0,7	1,0	1,4	1,7



Step 5: Select hinge

Full overlay		
		PU 200
	TB 42 (screw-on)	1 073 711
	TB 43 (press-in)	1 029 522
	TB FIX (toolless)	1 063 453

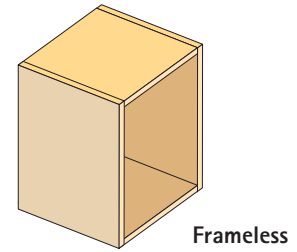
Step 6: Choose Silent System

For more technical information on Silent System refer to page 29

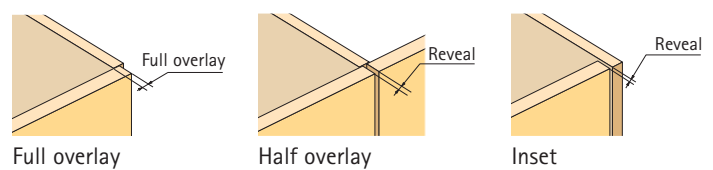
Door buffer Silent System (grey)		
clip-on	screw-on	drill-in
9 015 112	9 015 115	9 013 069
PU: 400	PU: 400	PU: 800

Frameless

Step 1: Determine cabinet construction



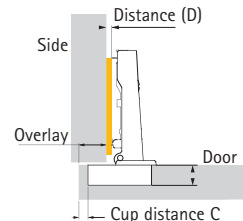
Step 2: Determine mounting option



Step 3: Cup distance

D	Overlay mm				
0	16	17	17,5	18	19
1,5	14,5	15,5	16	16,5	17,5
3	13	14	14,5	15	16
4,5	11,5	12,5	13	13,5	14,5
8	8	9	9,5	10	11
	3	4	4,5	5	6

Cup distance C mm

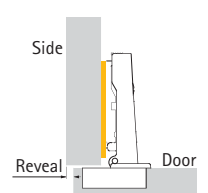


Step 4: Check minimum reveal

The minimum reveal is reduced for doors with radii:
1 mm radius: table entry – 0,4 mm
3 mm radius: table entry – 1,2 mm

Minimum reveal

Cup distance C mm	Door thickness mm				
	16	17	18	19	20
3	0,6	0,8	1,1	1,5	1,9
4	0,5	0,7	1,0	1,4	1,8
4,5	0,5	0,7	1,0	1,4	1,8
5	0,5	0,7	1,0	1,4	1,8
6	0,5	0,7	1,0	1,4	1,7



Step 5: Select hinge

Full overlay		
		PU 200
	TB 42 (screw-on)	1 073 711
	TB 43 (press-in)	1 029 522
	TB FIX (toolless)	1 063 453

Step 6: Choose Silent System

For more technical information on Silent System refer to page 29

Door buffer Silent System (grey)		
clip-on	screw-on	drill-in
9 015 112	9 015 115	9 013 069
PU: 400	PU: 400	PU: 800

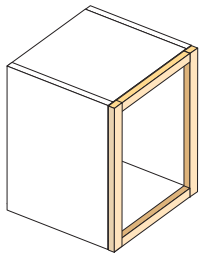
Technical information

Finding the right hinge



... is an easy task. You will find the right solution for face frame construction as well as for frameless cabinets. All necessary information on Intermat, Ecomat and Silent System is available on one page.

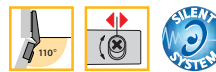
Face Frame



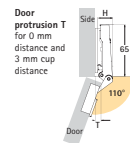
To use hinges in a face frame construction refer to this column

Intermat 9943 Fast-assembly hinge Opening angle 110°

Door thickness from 15 mm



Concealed hinge with snap-on assembly, integrated door overlay and eccentric depth adjustment
Opening angle 110°, cup diameter 35 mm
Shallow hole depth for door thickness min. of 15 mm
Intermat 9943 hinges are snapped on to the mounting plate
Depth adjustment via eccentric screw -0,5 mm/+3,5 mm
Height adjustment via mounting plate +2 mm/-2 mm
Overlay adjustment +0,5 mm/-3 mm

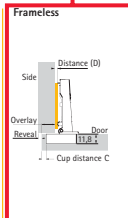
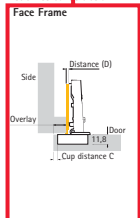


Mounting plates page 57-60
Cover caps accessories page 61
For more technical information refer to page 32-36

Cup distance C mm	Door thickness mm				
	16	17	18	19	20
3	0,6	0,8	1,1	1,5	1,9
4	0,5	0,7	1,0	1,4	1,8
4,5	0,5	0,7	1,0	1,4	1,8
5	0,5	0,7	1,0	1,4	1,8
6	0,5	0,7	1,0	1,4	1,7

Mounting option	H mm	T mm
Full overlay	18,5	7
Half overlay	28	16,5
Inset	34,5	23

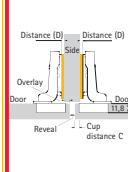
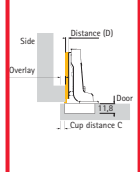
Cabinet construction



D	Overlay mm				
	16	17	17,5	18	19
1,5	14,5	15,5	16	16,5	17,5
3	13	14	14,5	15	16
5	11	12	12,5	13	14
8	8	9	9,5	10	11
	3	4	4,5	5	6

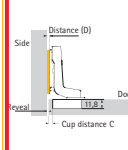
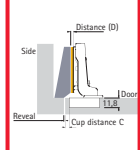
Full overlay	PU 200	Door buffer Silent System (grey)		
		clip-on	screw-on	drill-in
TB 42 (screw-on)	1 073 711	9 015 112	9 015 115	9 013 069
TB 43 (press-in)	1 029 522	PU: 400	PU: 400	PU: 800
TB FIX (toolless)	1 063 453			

Mounting plate distances (D):
Face frame: 0 mm; 4,5 mm
Frameless: 0 mm; 1,5 mm; 3 mm; 5 mm; 8 mm



D	Overlay mm				
	1,5	5	6	6,5	7
3	3	4	4,5	5	6

Half overlay	PU 200	Door buffer Silent System (grey)		
		clip-on	screw-on	drill-in
TB 42 (screw-on)	9 046 806	9 038 342	9 015 115	9 013 069
TB 43 (press-in)	1 030 921	PU: 400	PU: 400	PU: 800
TB FIX (toolless)	1 063 456			



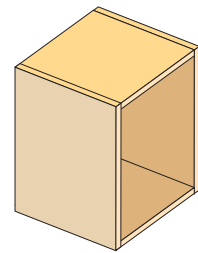
D	Reveal mm				
	5	4	3,5	3	2
3	3	4	4,5	5	6

Inset	PU 200	Door buffer Silent System (grey)	
		clip-on	screw-on
TB 42 (screw-on)	9 046 807	9 038 343	9 027 941
TB 43 (press-in)	1 030 925	PU: 400	PU: 50
TB FIX (toolless)	1 063 458		

For face frame application use half cranked hinge

hettich AT HOME IN ALL GOOD FURNITURE 37

Frameless



To use hinges in a frameless construction refer to this column

Tables and order numbers

On the right side you will find all tables to determine overlay, reveal and minimum reveal.
Order numbers for hinges and Silent System can also be found here.

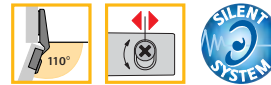
Technical information

Finding the right hinge

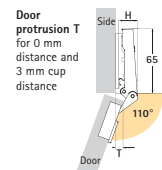


Intermat 9943 Fast-assembly hinge Opening angle 110°

Door thickness from 15 mm



Concealed hinge with snap-on assembly, integrated door overlay and eccentric depth adjustment
Opening angle 110°, cup diameter 35 mm
Shallow hole depth for door thickness min. of 15 mm
Intermat 9943 hinges are snapped on to the mounting plate
Depth adjustment via eccentric screw -0,5 mm/+3,5 mm
Height adjustment via mounting plate +2 mm/-2 mm
Overlay adjustment +0,5 mm/-3 mm



Mounting plates page 57-60
Cover caps, accessories page 61
For more technical information refer to page 32-36

Minimum reveal		Door thickness mm				
Cup distance C mm		16	17	18	19	20
3	0,6	0,8	1,1	1,5	1,9	
4	0,5	0,7	1,0	1,4	1,8	
4,5	0,5	0,7	1,0	1,4	1,8	
5	0,5	0,7	1,0	1,4	1,8	
6	0,5	0,7	1,0	1,4	1,7	

Mounting option	H mm	T mm
Full overlay	18,5	7
Half overlay	28	16,5
Inset	34,5	23

Step 1
Determine cabinet construction

Cabinet construction
Face Frame Frameless

Step 2
Determine mounting option

Full overlay

	PU 200
TB 42 (screw-on)	1 073 711
TB 43 (press-in)	1 029 522
TB FIX (toolless)	1 063 453

Door buffer Silent System (grey)

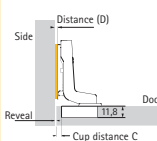
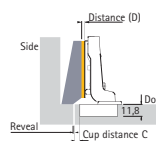
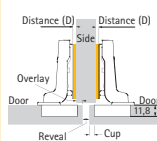
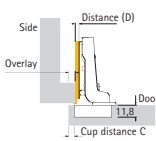
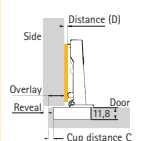
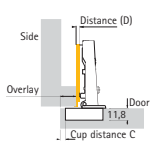
clip-on	screw-on	drill-in
9 015 112	9 015 115	9 013 069
PU: 400	PU: 400	PU: 800

D	Overlay mm				
0	16	17	17,5	18	19
1,5	14,5	15,5	16	16,5	17,5
3	13	14	14,5	15	16
5	11	12	12,5	13	14
8	8	9	9,5	10	11
	3	4	4,5	5	6

Cup distance C mm

Mounting plate distances (D):
Face frame: 0 mm; 4,5 mm
Frameless: 0 mm; 1,5 mm; 3 mm; 5 mm; 8 mm

Step 3
Find cup distances and mounting plate



Half overlay

	PU 200
TB 42 (screw-on)	9 046 806
TB 43 (press-in)	1 030 921
TB FIX (toolless)	1 063 456

Door buffer Silent System (grey)

clip-on	screw-on	drill-in
9 038 342	9 015 115	9 013 069
PU: 400	PU: 400	PU: 800

D	Overlay mm				
1,5	5	6	6,5	7	8
3	3	4	4,5	5	6

Cup distance C mm

D	Reveal mm			Side
3	9	7	6	5
3	12	10	9	8
	3	4	4,5	5

Cup distance C mm

Inset

	PU 200
TB 42 (screw-on)	9 046 807
TB 43 (press-in)	1 030 925
TB FIX (toolless)	1 063 458

Door buffer Silent System (grey)

clip-on	screw-on
9 038 343	9 027 941
PU: 400	PU: 50

D	Reveal mm				
5	5	4	3,5	3	2
3	3	4	4,5	5	6

Cup distance C mm

For face frame application use half cranked hinge